



**OLAER (Schweiz) AG**  
 Bonnstrasse 3, CH – 3186 Düringen  
 Tel. 026 492 70 00, Fax 026 492 70 70  
 E-mail: info@olaer.ch www.olaer.ch

**10 - 50 Litre / 16 bar**

## Construction

**OSP 410**

Bladder accumulator with grid - welded pressure vessel - all metallic parts in stainless steel - heavy duty gas inlet valve - detachable.

## Charger pressure $P_0$

Between  $0,9 P_1$  and  $0,2 P_2$   
 Other pressure ratios on request.

## Temperature range

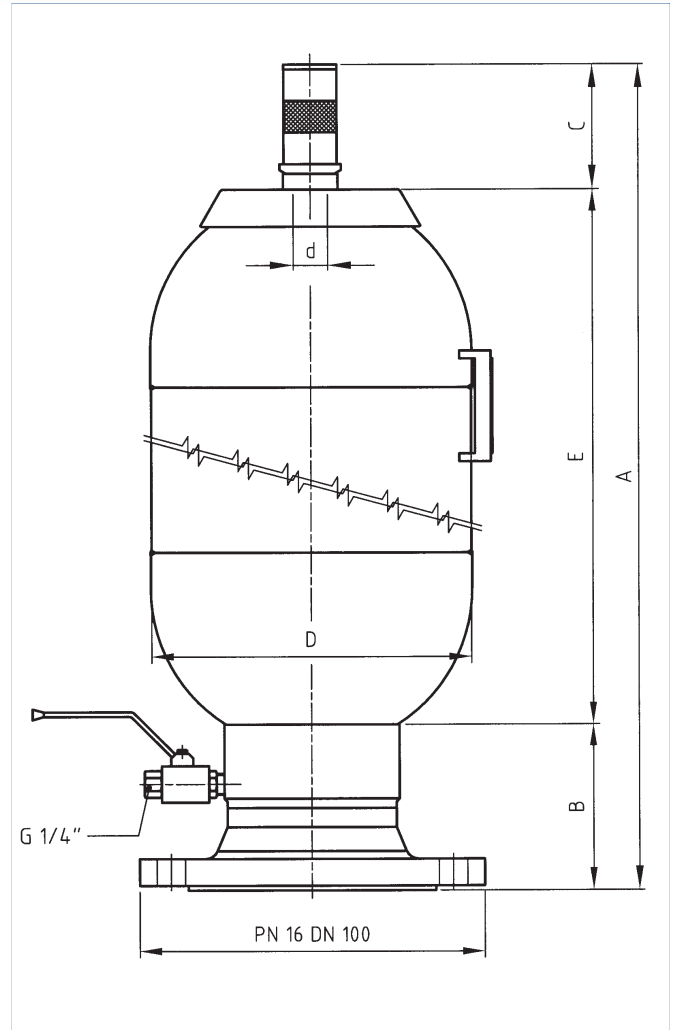
Standard model -  $15^{\circ}\text{C}$  to  $+100^{\circ}\text{C}$   
 Other ranges on request.

## Volumetric flow $Q$

The max. values given in the selection table apply only for a vertical installation (hydraulic assembly downwards). If the accumulator is mounted horizontally or when the volumetric flow is higher, please inquire of OLAER.

## Hydraulic fluid

Hydraulic oil (mineral oil)  
 Other mediums, such as bio-degradable hydraulic oil, non-inflammable liquids, water, emulsions, fuels, ect. should be specified at the time of ordering.



## Method of mounting

Clamps with rubber inlays, see Ndata sheetOSP 775 "Accumulator-Accessories".

## Installation

Vertical (hydraulic assembly downwards) to horizontal.  
 Leave a space of 200mm free above the gas inlet valve for attaching the tester and pressurizer instrument.

Model	Gasvol. $V_0$ litre	Work- press. bar	Masse kg	$Q$ max. l/min	Dimensions in mm					
					A	B	C	$\varnothing D$	$\varnothing d$	E
IBV 10 - 16 / 90 - RF	8,5	16	12	900	524	105	80	206	22	339
IBV 20 - 16 / 90 - RF	18,2	16	16	900	855	105	80	206	22	670
IBV 32 - 16 / 90 - RF	34	16	22	900	1392	105	80	206	22	1207
IBV 50 - 16 / 90 - RF	50	16	29	900	1905	105	80	206	50	1720

Issued in accordance with PED 97/23/EC with CE marked

Additional approvals on request

## Spare parts list

Models : IBV 10 to IBV 50

Part No.	Part	Rec. spare part
1	Valve cap and gasket	
2	Gas inlet valve and gasket	
3	Gas inlet valve assembly	
4	Nut	
5a	Bladder $\varnothing$ d = 22mm	
5b	Bladder $\varnothing$ d = 50mm	
6a	Bladder assembly $\varnothing$ d = 22mm	x
6b	Bladder assembly $\varnothing$ d = 50mm	x
7	Protective cap	
14	Gasket assembly (contains all gaskets)	x
17	Grid with spring ring	
18	Ball valve	

**Order example :**

Bladder assembly for Accumulator IBV 50 - 16 - RF Pos. 6b

