



# Accumulator Accessories

## Nitrogen charging unit

Type SLG 4

OSP 765

### Description

The OLAER Type SLG 4 charging unit is used for precharging accumulators with a capacity of 4 litres, and up to 300 bar. Compactness and low weight are the major advantages of this unit. Additionally, it is possible to drive the unit with nitrogen as the driving and conveying medium or with compressed air as the driving medium.

### Composition

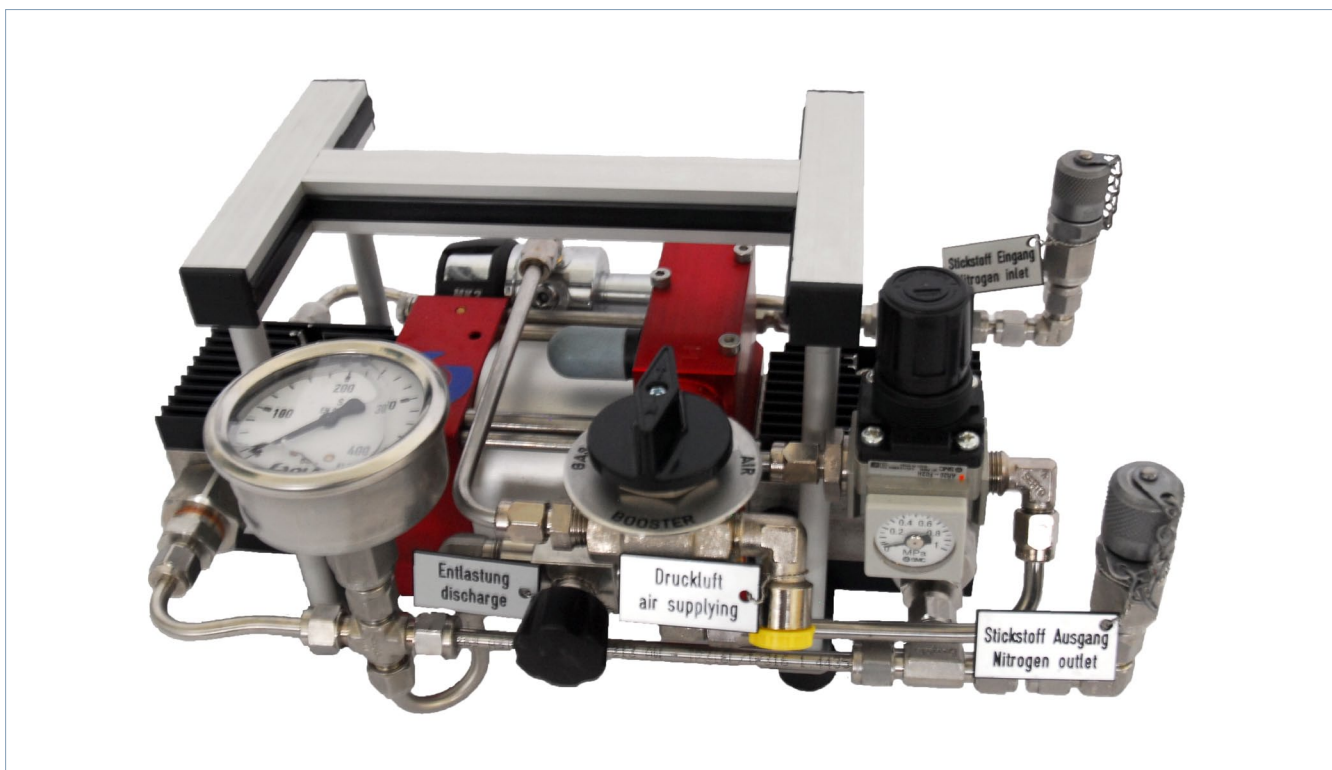
- Nitrogen driven gas booster ROB 32D
- Pressure regulator
- Pressure reducer 200/9 bar
- 3-port valve
- Relief valve
- Connecting and filling hoses

### Technical data

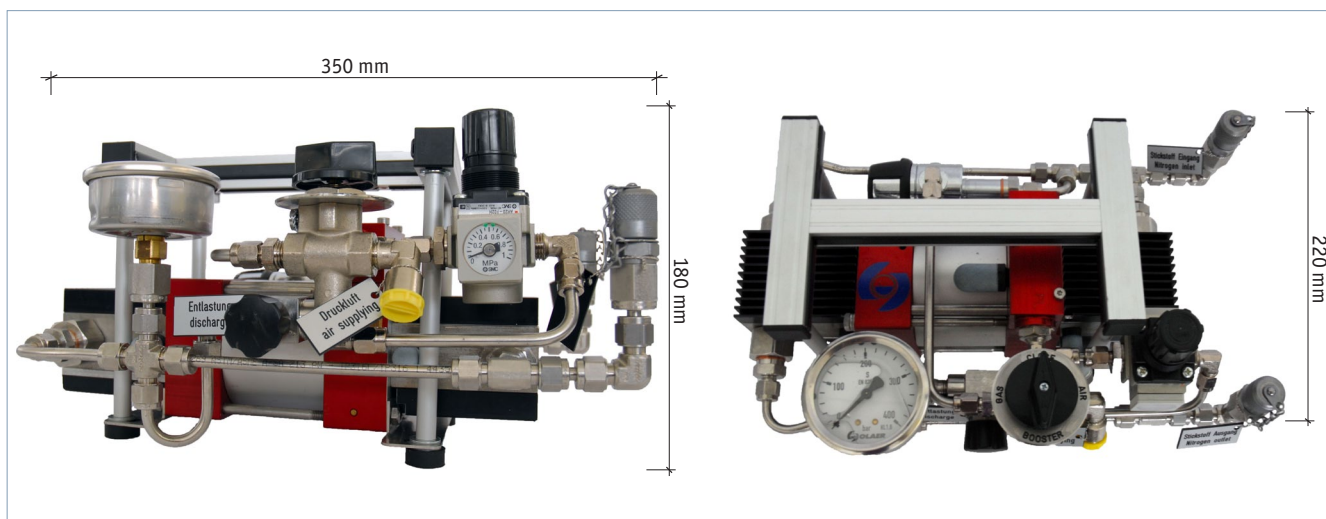
- Driving medium 1–10 bar / 14,5–145 psi
- Max. operating pressure 300 bar / 4,350 psi
- Gas ratio 1:32
- Stroke volume/double stroke 11,6 cm<sup>3</sup> / 0.7 cu.inch
- Weight approx. 8,6 kg
- Max. operating temperature 60 °C
- Inlet pressure 50–300 bar / 725–4,350 psi
- Materials
  - Gaskets PTFE, FKM / FPM
  - High-pressure frame 1.4404
  - Piston 1.4112

### Connections

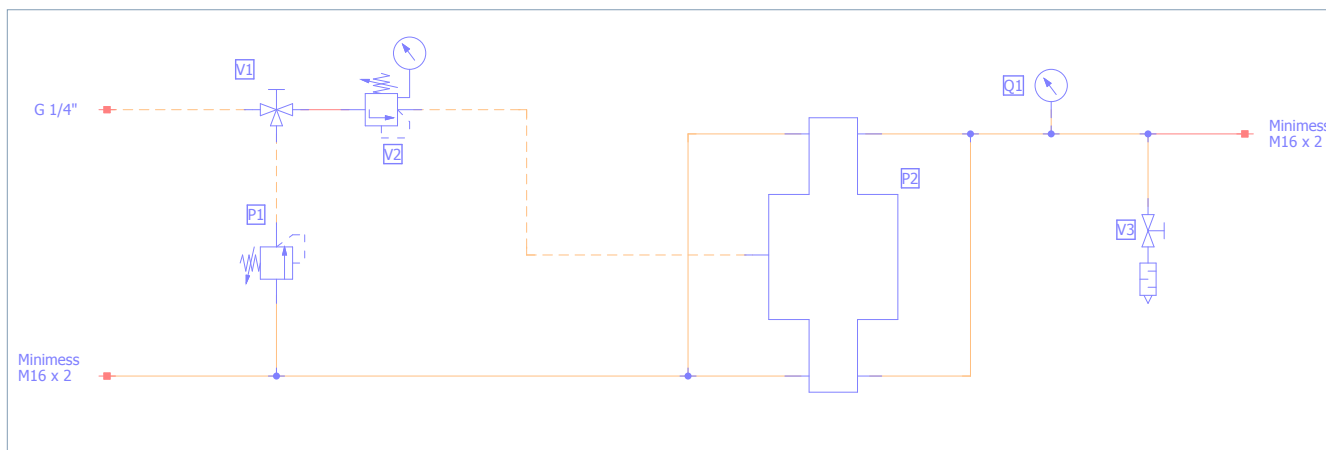
- Filling hose 1,5 m to connect nitrogen cylinder W 24,32
- Filling hose 2,0 m to connect tester pressurizer OLAER type VGU
- Compressed air G ¼" internal thread



## Outline drawing



## Diagram



## Filling time for 3 litres

Operating temperature Inlet pressure	75 bar	100 bar	125 bar	150 bar	175 bar	200 bar	225 bar	250 bar
50 bar	30 s	70 s	125 s	185 s	265 s	355 s	480 s	640 s
100 bar			15 s	30 s	50 s	70 s	95 s	120 s
150 bar					8 s	15 s	25 s	40 se

OSP 765 - Version 1